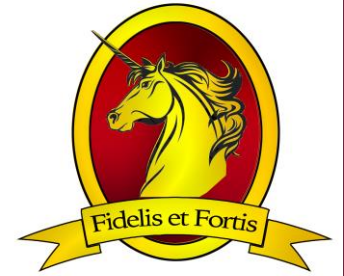


# James Gillespie's High School



## Senior Coursing Information

Wednesday 15<sup>th</sup> January 2025

# Scottish Curriculum for Excellence Stages

P1-S3

Broad General Education

S4-6

Senior Phase

Leaver

Further Education,  
Employment or Training

# Senior Phase – Education Scotland




The Senior Phase is the phase when the young person will build up a portfolio of qualifications. It is the stage of education at which the relationship between the curriculum and National Qualifications becomes of key significance.

The curriculum framework and the qualifications system will provide a range of opportunities to meet the needs of all learners, whether aspiring to achievements at SCQF Level 1 or SCQF Level 7.

# THE SCOTTISH CREDIT AND QUALIFICATIONS FRAMEWORK

This Framework diagram has been produced to show the mainstream Scottish qualifications already credit rated by SQA and HEIs. However, there are a diverse number of learning programmes on the Framework, which, due to the limitations of this format, cannot be represented here. For more information, please visit the SCQF website at [www.scqf.org.uk](http://www.scqf.org.uk) to view the interactive version of the Framework or search the Database.



SCQF Levels	SQA Qualifications			Qualifications of Higher Education Institutions	Apprenticeships & SVQs		
12					Doctoral Degree	Professional Apprenticeship	
11					Masters Degree, Integrated Masters Degree, Post Graduate Diploma, Post Graduate Certificate	Graduate Apprenticeship Professional Apprenticeship SVQ	
10					Honours Degree, Graduate Diploma, Graduate Certificate	Graduate Apprenticeship Professional Apprenticeship	
9					Bachelors / Ordinary Degree, Graduate Diploma, Graduate Certificate	Graduate Apprenticeship Technical Apprenticeship SVQ	
8		Higher National Diploma			Diploma Of Higher Education	Higher Apprenticeship Technical Apprenticeship SVQ	
7	Advanced Higher, Awards, Scottish Baccalaureate	Higher National Certificate			Certificate Of Higher Education	Modern Apprenticeship SVQ	
6	Higher, Awards, Skills for Work Higher					Modern Apprenticeship Foundation Apprenticeship SVQ	
5	National 5, Awards, Skills for Work National 5					Modern Apprenticeship SVQ	
	National 4, Awards	National	National				

# National Qualifications – How They Compare

Level 3	Level 4	Level 5	Level 6	Level 7
Standard Grade Foundation/ Access 3	Standard Grade General/ Intermediate 1	Ordinary ('O') Grade/ Standard Grade Credit/ Intermediate 2	Higher	Certificate in Sixth Year Studies (CSYS)/ A-Level

[illegible]

# National Parent Forum of Scotland Guidance

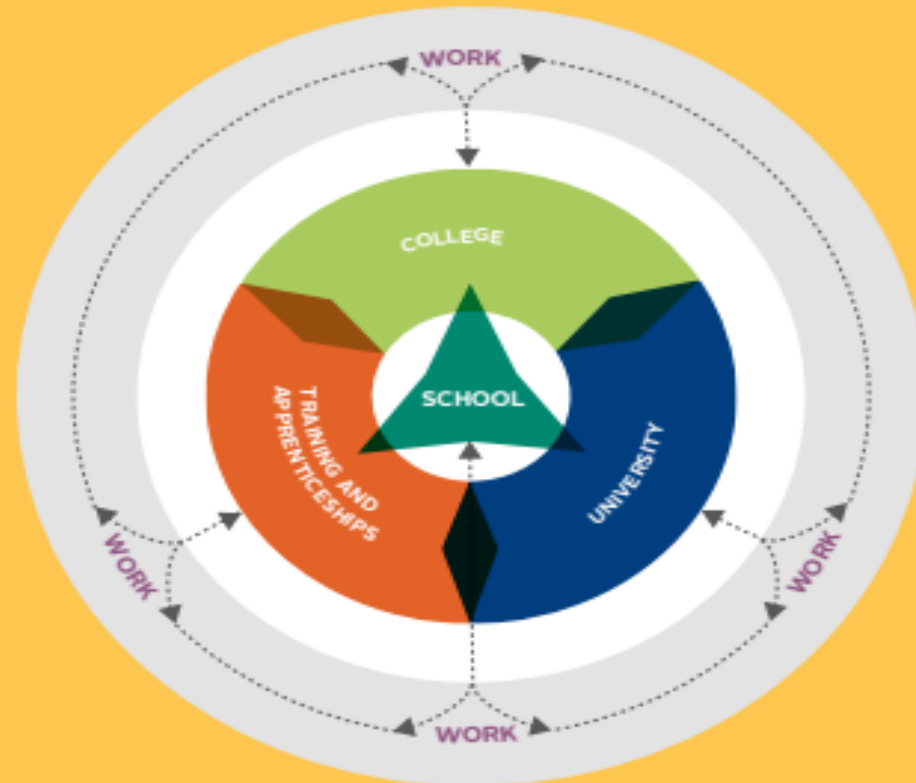
'Career Education: A World of Possibilities' on *The National Parent Forum of Scotland* has excellent advice on the various pathways and opportunities for all pupils.

Below is a diagram regarding post-school choices – more information can be [found here](#).

## Senior Phase and Post-School Choices

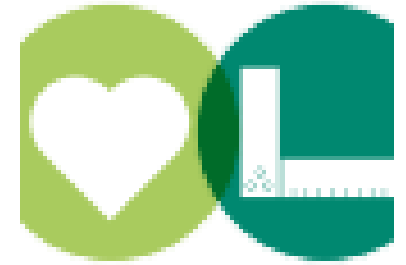
Schools, colleges, training providers, universities, businesses and employers are increasingly working together to provide exciting new opportunities for young people. College-school partnerships enable young people to attend both school and college; in some areas, colleges are providing courses in learning hubs on school campuses. College-university partnerships enable learners to achieve qualifications at a pace that is right for them.

Modern Apprenticeships (MAs) are an ideal way to combine learning with working and earning. Over 80 types of MA are on offer, at different levels and in different sectors, including Technical and Professional Apprenticeships (degree and Master's degree levels) and Foundation Apprenticeships (delivered by schools and colleges). These provide industry-recognised qualifications in sectors such as finance, health and social care, construction and energy.



# Skills Development in the Senior Phase

- Achieving qualifications are important, but they are only part of the story.
- At school, we aim to develop the following:
  - **Skills for Learning**
  - **Skills for Life**
  - **Skills for Work**
- Whatever a pupil's route into employment is, they will need to develop a wide range of other skills. Some of these skills will be developed through their courses, whilst others are about self-discipline and working as part of the school community.
- Sometimes pupils will need to put themselves well outside their comfort zone and do some things they didn't think they could do (or even wanted to do!). S5/6 should provide an opportunity for skills development; **it is up to pupils to grab the opportunities open to them.**
- Here is a [link to Skills in A Nutshell](#) from the *National Parent Forum of Scotland*.



## School Leaver?

---

Pupils who reach the age of 16 between 1<sup>st</sup> March and 30<sup>th</sup> September 2025 can choose to leave school at the end of the current academic session.

---

**Pupils must let their Pupil Support Leader know as soon as possible if they are considering leaving at the end of this school year.**

---

Pupils who reach the age of 16 between 1 October 2025 and 28<sup>th</sup> February 2026, may leave school at the end of December 2025.

---

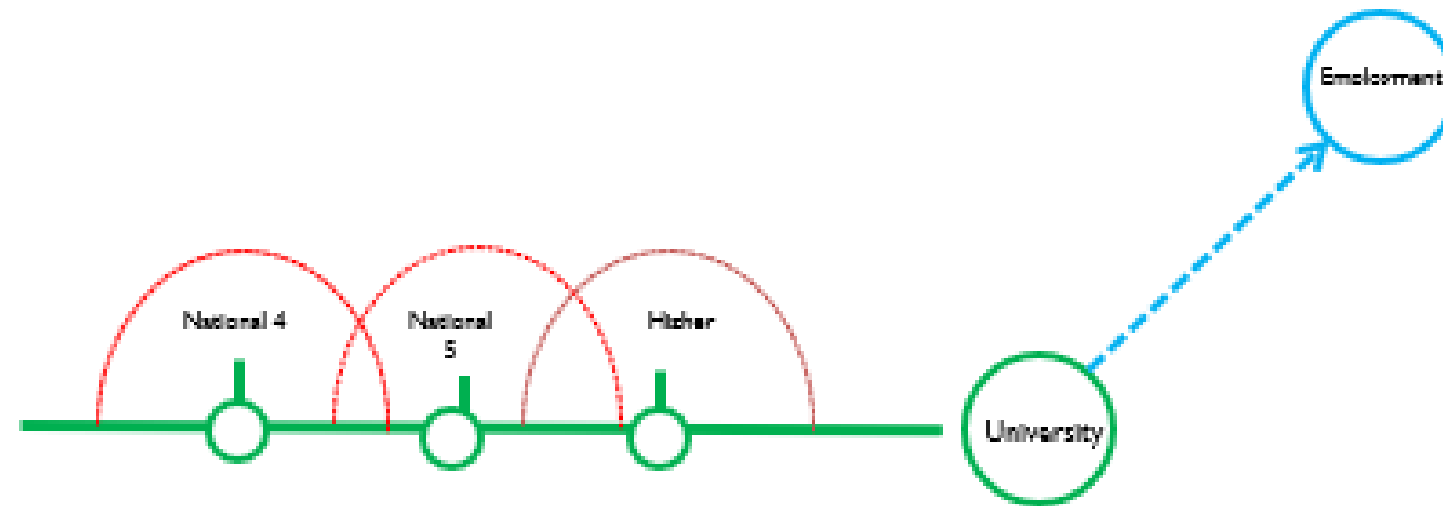
For this group of pupils, they must still be engaged in a package of formal education or training until then, arranged after discussion with their Pupil Support Leader.



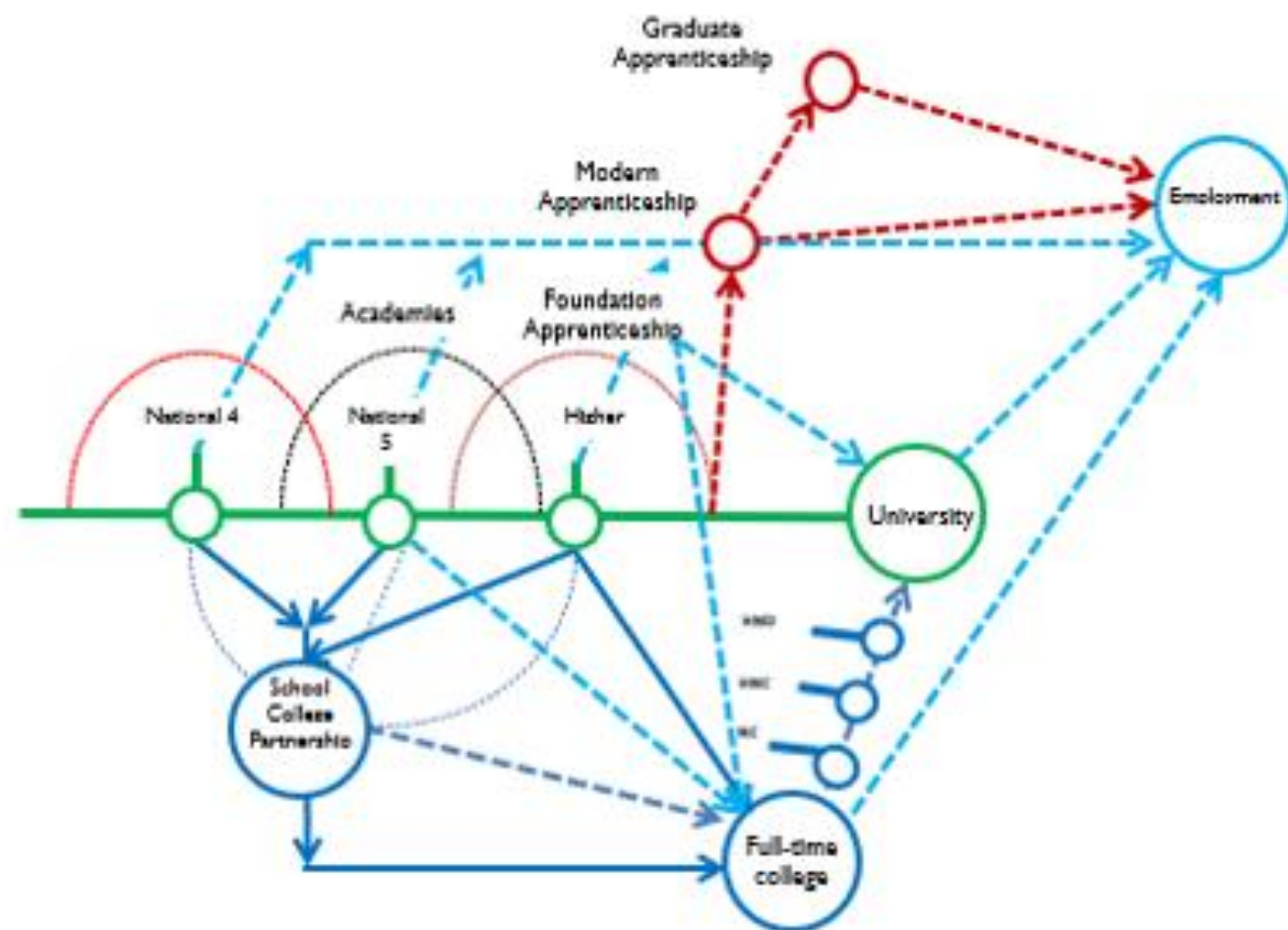
# Returning for S5 and S6

- Returning to school is a **choice**, not an obligation (if pupils are aged 16 by 30<sup>th</sup> September 2025).
- S5/6 is important preparation for the next stage in life - pupils need to make themselves an attractive candidate for employment, training or further study.
- Although we work hard to provide suitable pathways for all, there are incredible opportunities outside of school for study, training and education. There are many ways to enter the workplace, get a good job and have a successful career.
- School is a great start on this journey, but pupils should choose the best route for them.
- Not all pupils wish to attend university, or some may not attain the required results for this at school, but **there are other ways to enter further and higher education.**
- Whilst studying at school, pupils have the option to combine school with other opportunities such as:
  - ✓ Part-time courses at Edinburgh College (which can then lead to a Higher National Certificate (HNC), a Higher National Diploma (HND) and then possibly university entrance)
  - ✓ Foundation Apprenticeships (which can lead to Modern and Graduate Apprenticeships)
  - ✓ Work Experience (this will need discussion with the relevant Pupil Support Leader)

## Traditional Driver for the Senior Phase



# Senior Phase Pathways



# Schools College Partnership (SCP)

- We benefit from a close working relationship with Edinburgh College.
- We work together to timetable a common 'travel column' across all secondary schools which allow S5/6 pupils to take up introductory college courses on Tuesday and Thursday afternoons.
- The course offering from the college has grown year-on-year. They provide excellent courses in state-of-the-art facilities across SCQF levels 3-7 which then provide progression opportunities for further study at college and/or university. Pupils can apply to undertake an SCP course by applying on the college website - <https://www.edinburghcollege.ac.uk/courses/for-school-pupils> *(the 2025 offer will be updated at the end of January/start of February)*
- A list of courses on offer is available to view [here](#)
- It is important to note that interested pupils must apply for courses themselves, **and not through school**. If accepted, pupils should notify their Pupil Support Leader.
- Open days, where pupils can visit the relevant college campus, will take place in February 2025.
- Interested pupils should select '**college**' for their subject choice.



## WHAT IS A FOUNDATION APPRENTICESHIP?

You can get a head start in your career now with a Foundation Apprenticeship. An FA will give you work-based learning experience as well as an industry-recognised qualification at SCQF level 4, 5 or 6. With this opportunity you will spend time in college and time working on a real-life work based project, developing skills and knowledge to take you on the next step in your learning or career.

Foundation Apprenticeships

# Foundation Apprenticeships



Foundation Apprenticeships

# Foundation Apprenticeships

## WHY CHOOSE A FOUNDATION APPRENTICESHIP?

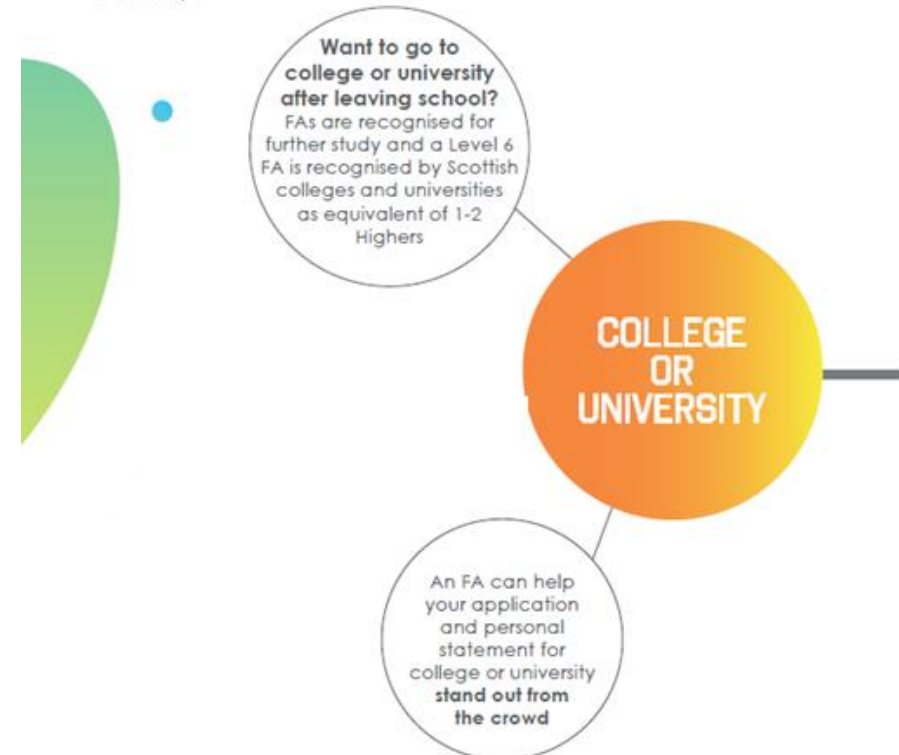


Foundation Apprenticeships

# Foundation Apprenticeships

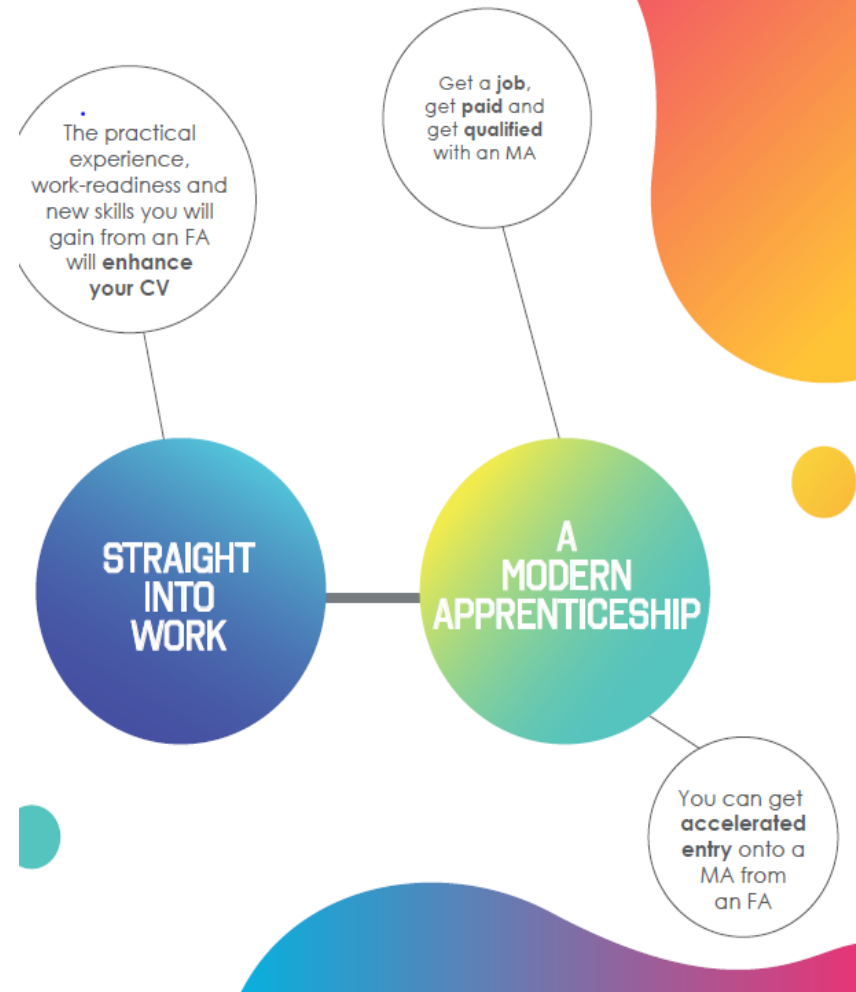
## WHERE CAN A FOUNDATION APPRENTICESHIP TAKE YOU?

A Foundation Apprenticeship can lead to many different career paths including directly into college, employment, a Modern Apprenticeship, a Graduate Level Apprenticeship or University.



# Foundation Apprenticeships

WHERE CAN A  
FOUNDATION  
APPRENTICESHIP  
TAKE YOU?



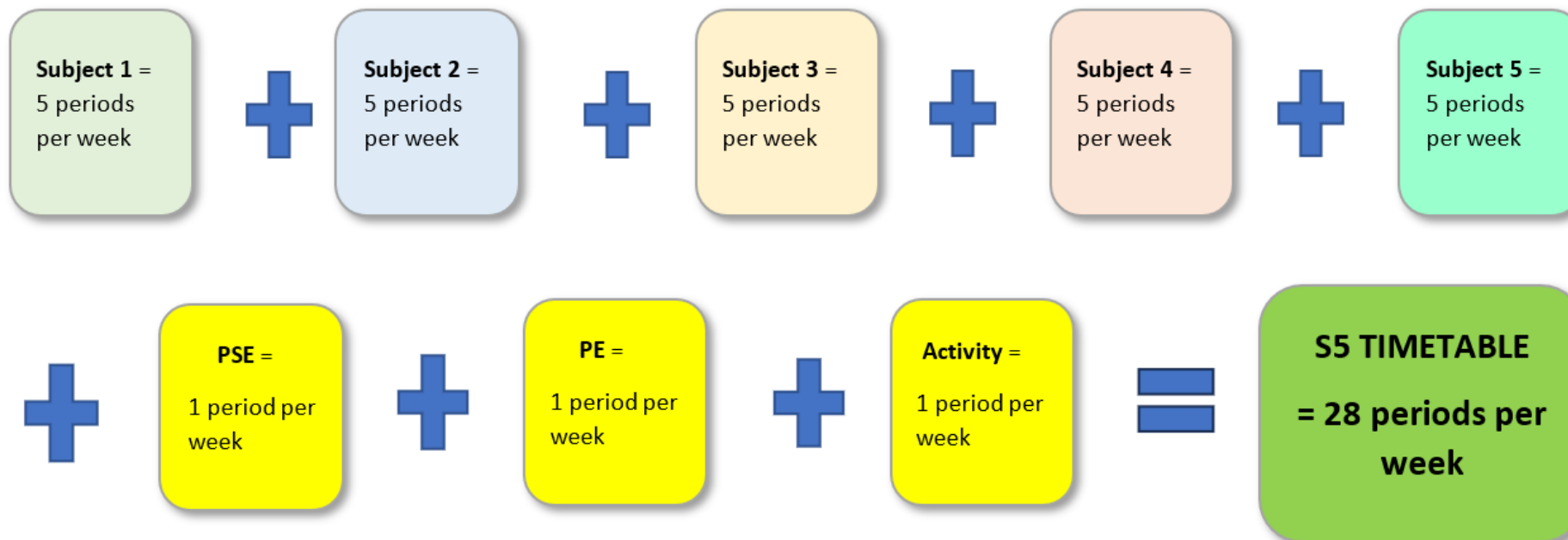


# 2-Year Foundation Apprenticeships

- This is an option for S4 pupils only, as takes place over 2 years during S5/6. These are offered through Edinburgh College:
  - Year 1 (S5): Attend college on a Tue/Thu afternoon working towards a level 6 National Progression Award.
  - Year 2 (S6): Work placement.
  - Years 1 and 2: Work visits, visiting lecturers, employer challenge projects etc. takes place
- 2-year F.A.s are offered across a wide range of areas, from Accounting and Engineering to Music Sound Production and Social Services and Health Care.
- More information on Foundation and Modern Apprenticeships can be found [here](#)
- Interested pupils should research these and select 'College' on their course choice form.

# 1-Year Foundation Apprenticeships

- This is an option for S4 and S5 pupils, as is a 1-year course. The subjects on offer for this are detailed in the S4/5 Course Choice and Pathways 2025 booklet.
- You will complete a National Progression Award at level 6 in school.
- At another time in the week, you will go to an employer to complete a work placement. Whilst on placement you will undertake a number of tasks set by the employer and gather evidence of your work. A work-based assessor will look at your evidence and successful completion of your placement tasks will result in you achieving SVQ units.
- There is no final exam at the end of the course. You are assessed on a unit-by-unit basis and will achieve the qualification by obtaining a pass in each unit assessment. You will complete a portfolio of work during your placement, and you will have a workplace mentor to guide you. The portfolio will be marked by a workplace assessor.



## S5 Timetable

- Our experience is that busy pupils are happier, more productive and less likely to fall into bad habits. Therefore, pupils returning for S5 are expected to be timetabled for **5 subject courses** (or 4 subjects and Support for Learning if appropriate) from the options available. Reduced timetables will only be considered via written requests to the appropriate Community Head with accompanying medical letters if necessary.
- It is recommended that pupils request subjects based on what they have studied in S3 & S4 for progression of learning. Any pupil who wishes to undertake a subject not previously studied in S3/4 must request to do this at National 5 level.
- A 'crash' Higher in S5 will not be considered **without approval from the faculty Curricular Leader and without certain entry requirements**. They will have the final decision in this matter.

# S5 – Making Subject Choices

The following are core subjects during S5:

- PSE (1 period)
- Core PE (1 period)
- S5 activity (1 period - this replaces core RME)

These will automatically be added to your timetable.



You will need to choose **5 subjects** from the table below.

This should be at the appropriate level. For example:  
Higher English if you are on course to pass Nat. 5 English at a grade A or B;  
Nat. 5 Biology if you are presented for Nat. 4 Biology in S4 etc.



## SCHOOL COURSE ENTRY REQUIREMENTS

To choose a subject at Higher/level 6 in S5, **pupils must meet the entry requirements**. Pupils who are not on track to achieve this will be advised to choose an alternative subject by their Pupil Support Leader at their individual coursing discussion conducted during January 2025. PSLs will use attainment tracking and evidence of progress when discussing appropriate courses.

Entry requirements for a Higher/level 6 course of study are:

- Grade A or B at National 5/Level 5 in the same or closely related subject (e.g. For H Engineering Science, A or B at N5 Physics would be considered)
- Grade C will be considered on an individual basis after consultation with your PSL and the Curricular Leader.

Grade D or lower will not be permitted entry to a Higher/level 6 course of study due to the increased challenge at this level. More information on SQA exam progression statistics from Nat. 5 to Higher can be found on the Progression Tables: [found here](#)

## Additional information:

- Please thoroughly research the content and detail for each course in Section 4 of this booklet.
- You must ensure you have met the entry requirements before choosing your courses.
- You must let your PSL know if you are considering leaving school at the end of this academic session. (May 2025)
- Course choices will be made using the online system TOOLS – your PSL will enter your subject choices into this after a coursing discussion with you.
- Deadline for course choice is **Friday 21st February 2025**. If you do not submit choices by then, you may be allocated subjects not of your own choosing.

**Please note that the school may need to amend or remove any of the courses listed below due to pupil uptake or staffing capacity. If this occurs, reserve subjects will be used.**

# S5 Course Offer 2025

Qualification Level	School Based Subjects			
<b>SCQF Level 4</b> National 4/NPA	<ul style="list-style-type: none"> <li>English</li> </ul>	<ul style="list-style-type: none"> <li>Mathematics</li> </ul>	<ul style="list-style-type: none"> <li>Computer Games Development</li> </ul>	<ul style="list-style-type: none"> <li>NPA Cyber Security</li> </ul>
<b>SCQF Level 5</b>  National 5  National Progression Award (NPA)	<ul style="list-style-type: none"> <li>Art and Design</li> <li>Application of Maths</li> <li>Biology</li> <li>Chemistry</li> <li>Communication and Literature (English)</li> <li>Computing Science</li> <li>Computer Games Development</li> </ul>	<ul style="list-style-type: none"> <li>Creative Thinking</li> <li>Cyber Security</li> <li>Dance</li> <li>English</li> <li>French</li> <li>Geography</li> <li>German</li> <li>Graphic Communication</li> </ul>	<ul style="list-style-type: none"> <li>Laboratory Science</li> <li>Leadership in Languages</li> <li>Mandarin</li> <li>Mathematics</li> <li>Mental Health and Wellbeing</li> <li>Media Studies</li> <li>Modern Studies</li> <li>Music</li> </ul>	<ul style="list-style-type: none"> <li>Physical Education</li> <li>Physics</li> <li>Practical Cake Craft</li> <li>Product Design and Manufacture</li> <li>Psychology</li> <li>Spanish</li> <li>Sports Leadership and Exercise and Fitness</li> <li>Travel and Tourism</li> </ul>
<b>SCQF Level 6</b>  Higher  National Progression Award (NPA)  Foundation Apprenticeship (FA) - 1 year course	<ul style="list-style-type: none"> <li>Art and Design</li> <li>Application of Maths</li> <li>Biology</li> <li>Business</li> <li>Business Skills (at Boroughmuir H.S.)</li> <li>Chemistry</li> <li>Classical Studies</li> <li>Communication and Literature (English)</li> <li>Computing Science</li> </ul>	<ul style="list-style-type: none"> <li>Creative Thinking</li> <li>Dance</li> <li>Drama</li> <li>Engineering Science</li> <li>English</li> <li>Environmental Science</li> <li>French</li> <li><u>Gàidhlig</u></li> <li>Geography</li> <li>German</li> <li>Graphic Communication</li> </ul>	<ul style="list-style-type: none"> <li>History</li> <li>Human Biology</li> <li>Journalism</li> <li>Leadership in Mod. Languages</li> <li>Mandarin</li> <li>Mathematics</li> <li>Media Studies</li> <li>Modern Studies</li> <li>Music</li> <li>Music Technology</li> <li>Philosophy</li> </ul>	<ul style="list-style-type: none"> <li>Physical Education</li> <li>Physics</li> <li>Product Design &amp; Manufacture</li> <li>Psychology</li> <li>RMPS</li> <li>Scientific Technologies</li> <li>Social Services, Children and Young People</li> <li>Spanish</li> <li>Sports Leadership and Exercise and Fitness</li> </ul>
<b>COLLEGE COURSES:</b>  Schools College Partnership (SCP) and 2-year Foundation Apprenticeship	<p>You may also apply for other Foundation Apprenticeships (full 2-year course) at college or a Schools College Partnership course as one of your options. Edinburgh College offer many other courses and pathways from level 5 upwards - please use the link below for the courses on offer for 2025 – this is currently being updated but all 2025 courses will be finalised by the end of January and information shared with pupils and parents/carers. SCP and college FA courses will be timetabled for a <u>Tuesday &amp; Thursday afternoons</u> - pupils will need to travel to the relevant campus. Applications MUST be made separately (online by you) at <a href="https://www.edinburghcollege.ac.uk/courses/for-school-pupils">https://www.edinburghcollege.ac.uk/courses/for-school-pupils</a> Please let your Pupil Support Leader know if you are interested in applying for a college FA or SCP course when submitting your choices with them. Please refer to the course information on the college website and, if interested, select 'College' on the course choice form.</p>			



# S6 Coursing Information

## Returning for S6

- Pupils returning for S6 must be timetabled for a minimum of **15 points**, 12 of which must be subject-based (see following page).
  - Responsibilities and commitments that are not subject-based must be arranged prior to 1st June 2024 with Pupil Support Leaders and/or Community Head.
  - It is recommended that pupils undertake a course of study that best supports their next destinations beyond school.
  - For some this will mean studying Advanced Highers, but for many it will be more important to build a stronger portfolio of subjects at Higher (SCQF Level 6)
  - 'Crash' Advanced Highers will only be considered if a pupil has previously performed well in a related subject area at Higher level, **but this must be approved by the appropriate CL.**
  - S6 pupils can also consider studying a subject that may be offered at a neighbourhood school.
-

# S6 – Making Your Choices

S6 is based on a points system: you must have **15 points or above** to return to S6.  
**12 of these points must curricular-based with a minimum 3 subjects chosen.**

Other points can be gained by doing activities which promote and develop other vital skills such as joining a committee, coaching, supporting junior classes, work experience etc. You will be able to discuss this with your Pupil Support Leader.

You can choose any combination of activities using the school points value.

\* Please note that any work experience must be confirmed in writing **by the provider by 23rd May 2025**, so they can be factored into timetabling. This should be shared with your PSL

## Additional information:

- You must ensure that you have met the **course entry requirements** before choosing your courses.
- Please let your PSL know if you are considering leaving school at the end of this academic session. (May 2025)
- Course choices will be made using the online system TOOLS – your PSL will submit these for you during an individual coursing meeting which will be conducted after prelims.
- Deadline for course choice is **Thursday 27th February 2025**. If you do not submit choices by then with your PSL, you may be allocated subjects not of your own choosing.

Activity	School Point Value
National 5/level 5 course	4
Higher/level 6 course	4
Advanced Higher course/A-Level/Scottish Baccalaureate/level 7	5
Support of a junior class (weekly)	1
Out-of-school work experience (weekly) *	2
Other (as agreed with PSL/Community Head) such as Mental Health Companion, school sports coach, <u>Departmentor</u> etc.	1 or 2

Some examples:						
Advanced Higher +		Advanced Higher +		Advanced Higher		= 15 points
Advanced Higher +		Advanced Higher +		Higher +	Higher	= 18 points
Higher +	Higher +	Higher +	Work experience +		Supporting junior class	= 15 points
Higher +	Higher +	Higher +	MHC +	Junior class +	Junior class	= 15 points

**Please note that the school may need to amend or remove any of the courses listed below due to pupil uptake or staffing capacity. If this occurs, reserve subjects will be used.**



# S6 Course Offer 2025

Qualification Level	School Based Subjects			
SCQF Level 4 National 4/NPA	<ul style="list-style-type: none"> <li>English</li> </ul>	<ul style="list-style-type: none"> <li>Mathematics</li> </ul>	<ul style="list-style-type: none"> <li>Computer Games Development</li> </ul>	<ul style="list-style-type: none"> <li>NPA Cyber Security</li> </ul>
SCQF Level 5  National 5  National Progression Award (NPA)	<ul style="list-style-type: none"> <li>Art and Design</li> <li>Application of Maths</li> <li>Biology</li> <li>Chemistry</li> <li>Communication and Literature (English)</li> <li>Computing Science</li> <li>Computer Games Development</li> </ul>	<ul style="list-style-type: none"> <li>Creative Thinking</li> <li>Cyber Security</li> <li>Dance</li> <li>English</li> <li>Environmental Science</li> <li>French</li> <li>Geography</li> <li>German</li> <li>Graphic Communication</li> </ul>	<ul style="list-style-type: none"> <li>Laboratory Science</li> <li>Leadership in Languages</li> <li>Mandarin</li> <li>Mathematics</li> <li>Mental Health and Wellbeing</li> <li>Media Studies</li> <li>Modern Studies</li> <li>Music</li> <li>Physical Education</li> </ul>	<ul style="list-style-type: none"> <li>Physics</li> <li>Practical Cake Craft</li> <li>Product Design and Manufacture</li> <li>Psychology</li> <li>Spanish</li> <li>Sports Leadership and Exercise and Fitness</li> <li>Travel and Tourism</li> </ul>
SCQF Level 6  Higher  National Progression Award (NPA)  Foundation Apprenticeship (FA) - 1 year course	<ul style="list-style-type: none"> <li>Art and Design</li> <li>Application of Maths</li> <li>Biology</li> <li>Business</li> <li>Business Skills (at Boroughmuir H.S.)</li> <li>Chemistry</li> <li>Classical Studies</li> <li>Communication and Literature (English)</li> <li>Computing Science</li> <li>Creative Digital Media (S6 only)</li> </ul>	<ul style="list-style-type: none"> <li>Creative Thinking</li> <li>Dance</li> <li>Drama</li> <li>Engineering Science</li> <li>English</li> <li>Environmental Science</li> <li>French</li> <li>Gàidhlig</li> <li>Geography</li> <li>German</li> <li>Graphic Communication</li> </ul>	<ul style="list-style-type: none"> <li>History</li> <li>Human Biology</li> <li>Journalism</li> <li>Leadership in Mod. Languages</li> <li>Mandarin</li> <li>Mathematics</li> <li>Media Studies</li> <li>Modern Studies</li> <li>Music</li> <li>Music Technology</li> <li>Philosophy</li> </ul>	<ul style="list-style-type: none"> <li>Physical Education</li> <li>Physics</li> <li>Politics (S6 only)</li> <li>Product Design &amp; Manufacture</li> <li>Psychology</li> <li>RMPS</li> <li>Scientific Technologies</li> <li>Social Services, Children and Young People</li> <li>Spanish</li> <li>Sports Leadership and Exercise and Fitness</li> </ul>
SCQF Level 7  Advanced Higher/ A-Level/ Scottish Baccalaureate	<ul style="list-style-type: none"> <li>Art and Design</li> <li>Biology</li> <li>Chemistry</li> <li>Computing Science</li> <li>English</li> <li>French</li> </ul>	<ul style="list-style-type: none"> <li>Gàidhlig</li> <li>Geography</li> <li>German</li> <li>History (<i>possibly at another school</i>)</li> <li>Languages Baccalaureate</li> </ul>	<ul style="list-style-type: none"> <li>LEAPS</li> <li>Mandarin</li> <li>Mathematics</li> <li>Mathematics of Mechanics</li> <li>Modern Studies</li> <li>Music</li> </ul>	<ul style="list-style-type: none"> <li>Physics</li> <li>Science Baccalaureate</li> <li>Social Sciences Baccalaureate</li> <li>Spanish</li> <li>Statistics</li> </ul>
COLLEGE COURSES:  Schools College Partnership (SCP)	<p>You may also apply for a Schools College Partnership course as one of your options.</p> <p>Edinburgh College offer many other courses and pathways from level 5 upwards - please use the link below for the courses on offer for 2025. This is currently being updated but all 2025 courses will be finalised by the end of January and information shared with pupils and parents/carers.</p> <p>SCP and college FA courses will be timetabled for Tuesday &amp; Thursday afternoons - pupils will need to travel to the relevant campus.</p> <p>Applications MUST be made separately (online by you) at <a href="https://www.edinburghcollege.ac.uk/courses/for-school-pupils">https://www.edinburghcollege.ac.uk/courses/for-school-pupils</a></p> <p>Please let your Pupil Support Leader know if you are interested in applying for a college FA or SCP course when submitting your choices with them.</p> <p>Please refer to the course information on the college website and, if interested, select 'College' on the course choice form.</p>			





# Scottish Baccalaureate for S6

- The Scottish Baccalaureate consists of a coherent group of current Higher and Advanced Higher qualifications in associated subjects, but what makes a Scottish Baccalaureate unique is the Interdisciplinary Project.
- We offer the Scottish Baccalaureate (level 7) in the following subject areas:
  - **Languages**
  - **Science**
  - **Social Subjects**
- These subjects also include an Interdisciplinary Project which will be graded.
- Interested pupils should speak to the Curricular Leader of these subjects and refer to the course choice information booklet for more information.

# LEAPS - S6 Transition Course

- This course is open to young people who meet LEAPs [eligibility criteria](#) and is designed to give them the skills and experience needed to make a positive transition from school to university.
- Pupils will work with academics and students on first-year university level academic skills, developing their confidence and an understanding of what it takes to be successful at university. This is a unique opportunity to get the 'uni' experience before starting it for real.
- The course will focus on the key academic skills considered as essential for success at university. Taught by university staff, you will have the chance to try out new concepts and skills before completing a subject based project of your choice. There will be individual pieces of work, and times when you will work as a team.
- This will aid pupils' transition to university no matter what course they plan to study in the future. More information on LEAPs can be found [here](#).
- Pupils must be LEAPS eligible to choose this course(see above link), be aged 16 or over, have the ability to gain three Highers by the end of S6 and plan to make a UCAS application (this year, or in the future).

# Entry Requirements to School Courses

## Higher/SCQF Level 6 and Advanced Higher/SCQF level 7

- The jump from National 5 to Higher and from Higher to Advanced Higher should not be underestimated.
- The rigour and challenge of Higher and Advanced Higher courses rely on a secure knowledge and understanding of concepts at the previous level (e.g. at National 5 if wishing to progress onto Higher level). This is best demonstrated through attainment evidence at key assessment points during S4 and S5, with the prelim exams being the best source of evidence of the skills and knowledge necessary to cope with the next level of study.
- Pupils who have therefore achieved a grade A or B during their current course of study will have demonstrated the skills and knowledge necessary to undertake the 'jump' to the next level of study.
- Consideration for a C pass may be given under certain circumstances but strictly only with the advice from the appropriate Curricular Leader and Pupil Support Leader.
- Grade D or lower will not be permitted entry to a H/level 6 or AH/level 7 course of study due to the increased challenge at this level, unless there are extenuating circumstances that the Community Team and relevant Curricular Leader are aware of, and are happy to advise study at the next level. *For evidence of attainment from one level to the next, please see SQA progression statistics: [Progression - SQA](#)*



# How to Submit Subject Choices

- Your child's Pupil Support Leader will conduct individual coursing conversations with them in the next few weeks, where they will discuss what your child is considering choosing based on their future pathway, and current progress and attainment.
  - Their PSL will look at the progress and attainment during S4 or S5 and advise on appropriate next steps, based on the school's entry requirements for the next level of study.
  - It may be that a better route for some pupils is studying a Higher over S5 and S6 or studying a level 6 (equivalent to Higher) National Progression Award or Foundation Apprenticeship. These courses also afford opportunity for further study at university beyond school. College courses should also be considered for study next year.
  - Your child's Pupil Support Leader will then submit their course choice on TOOLS during this individual coursing conversation.
  - **Deadline for submission of course choice: Friday 21st February 2025.**
-

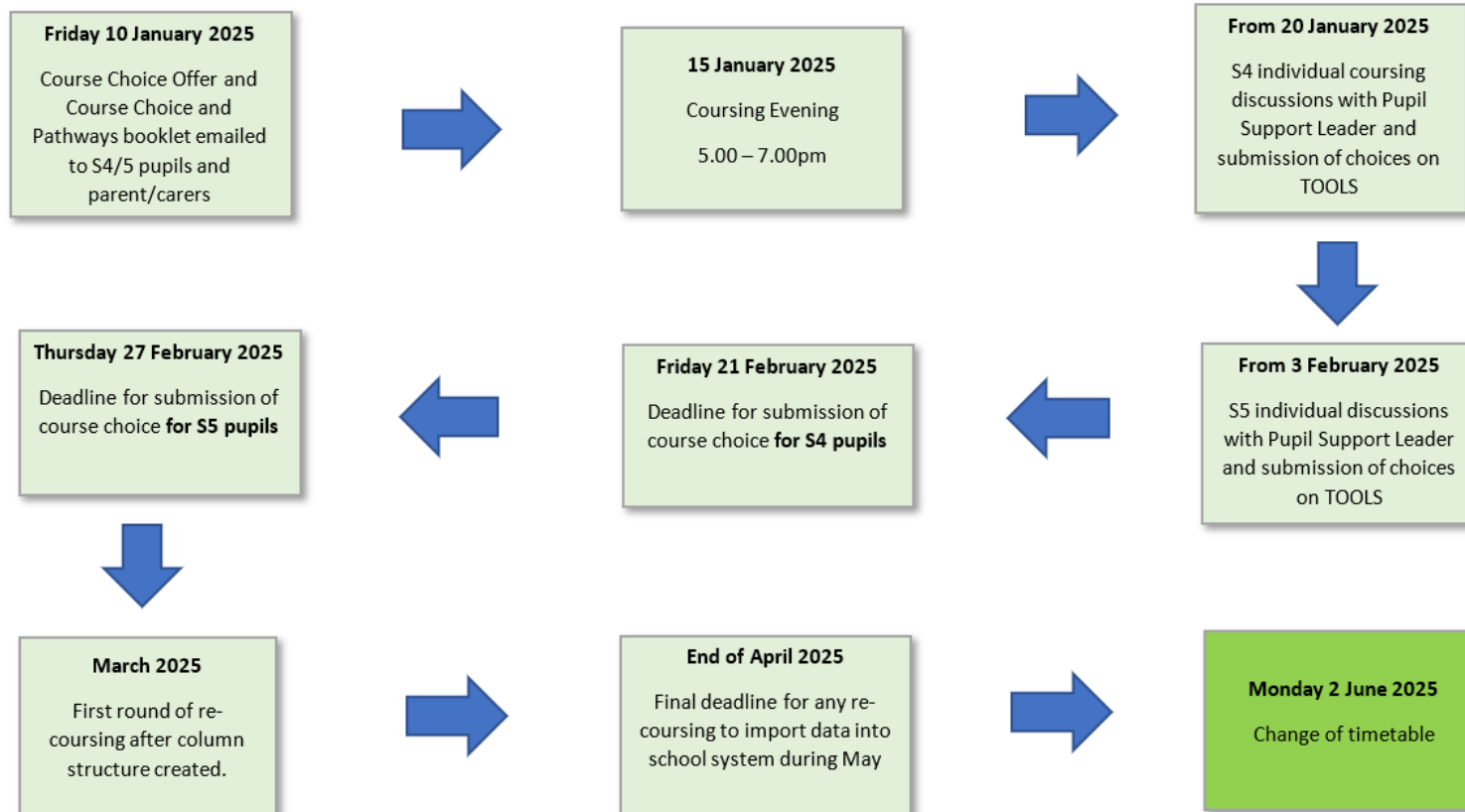


# How to Submit Subject Choices

## **Course Choice Deadline: Friday 21st February 2025**

- If your child wishes to return for S5 or S6 and does not attend their coursing meeting with their PSL, then no subjects will be entered for them on TOOLS.
  - If your child misses their coursing meeting, or needs this re-arranged, they must speak to/email their PSL immediately and re-arrange this before the deadline.
  - You will be emailed a copy of their choices after the deadline.
  - Please be aware that these submitted choices will remain in place until exam results are issued, and no changes will be made before then unless a pupil has achieved the entry requirement for a course, and there is space in the course.
  - There will be an opportunity to re-course pupils in August if they have achieved the entry requirement after exam results, and if there is space in the selected change of subject at that time.
-

# Key Dates



# Key Contacts

- If your child has any queries or issues making course choices, they should contact their Pupil Support Leader in the first instance during their 1:1 meeting or during a PSE lesson.
- If you or your child wish to email their PSL, please email on the school address and request that it is passed to the appropriate PSL:

[Admin@jamesgillespies.edin.sch.uk](mailto:Admin@jamesgillespies.edin.sch.uk)

- For careers and college advice, please email Kyle Hamilton, Skills Development Scotland careers coaches:

[Kyle.Hamilton@sds.co.uk](mailto:Kyle.Hamilton@sds.co.uk)

- For any re-coursing, please see Mrs O'Brien in her office on the ground floor of Malala or email:

[Deirdre.O'Brien@jamesgillespies.edin.sch.uk](mailto:Deirdre.O'Brien@jamesgillespies.edin.sch.uk)